

# Trauma Informed Care: A Systematic Approach to Health Care



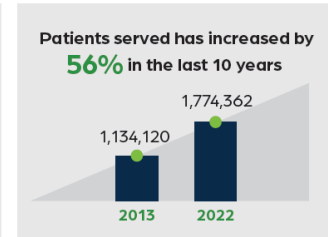
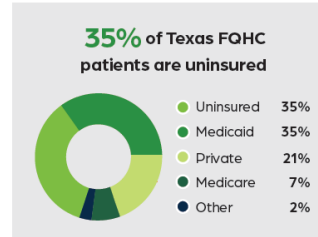
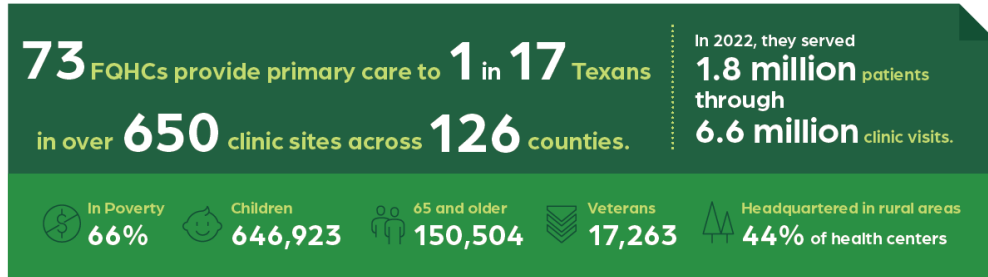
**TACHC**  
— TEXAS ASSOCIATION OF —  
COMMUNITY HEALTH CENTERS

# Texas Association of Community Health Centers (TACHC)

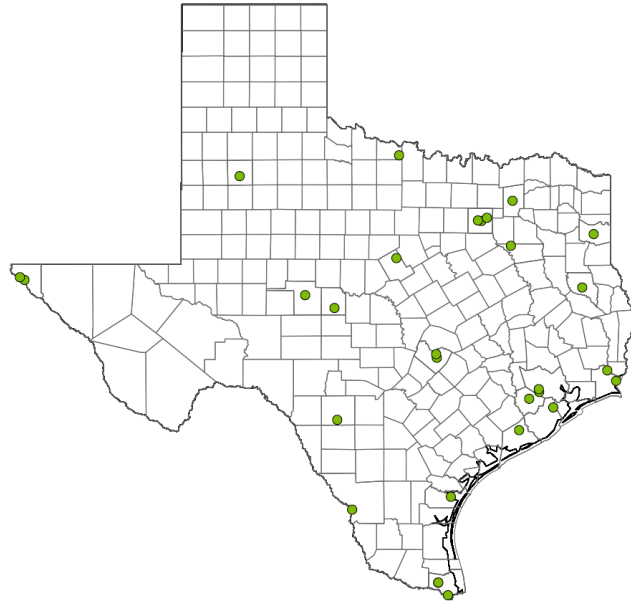


Formed in 1983, the Texas Association of Community Health Centers (TACHC) is the federally designated primary care association for Texas. Members operate in Texas's urban, rural, and frontier areas, all with the mission of advancing access to healthcare for all Texans.

**Our mission is to strengthen and support community health centers to speak with a unified voice and drive healthcare transformation by exemplifying innovation, access and equity.**



# Texas Association of Community Health Centers (TACHC)



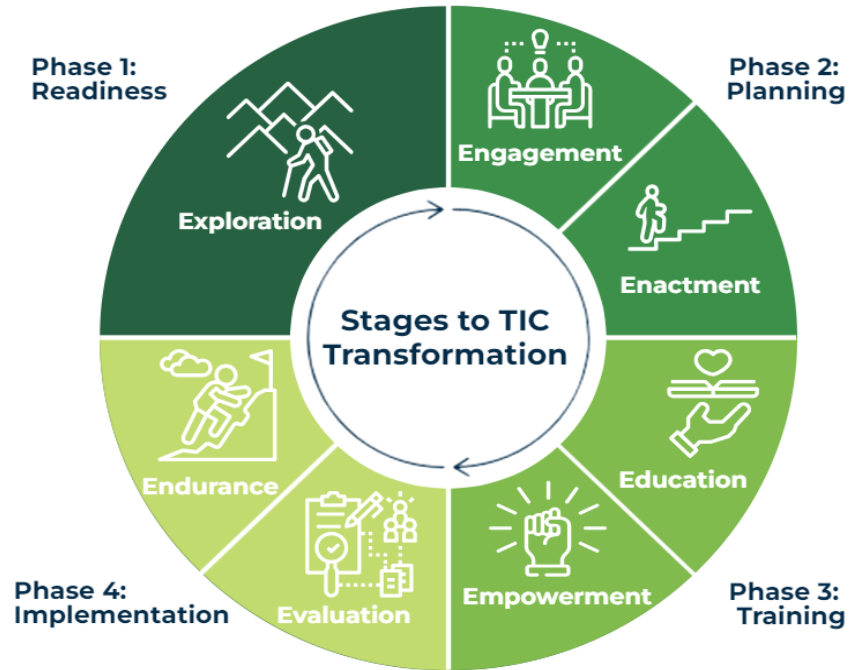
**41% of 73  
Texas Health Centers**

- Bayou (3)
- Border (5)
- East (6)
- North (5)
- South (4)
- West (3)



# Our Framework & Program

# Trauma Informed Care Program



# A Trauma Informed Future



## EDUCATION

Inquiry-based model fosters empowerment and deep knowledge gain by learners.



## IMPLEMENTATION

Coaching Calls, peer support, and ongoing assessment propel tailored plans.



## TRANSFORMATION

Ongoing support and leveled-trainings empower health centers to grow.

# Our Model



**Face-to-Face  
Cohort  
Trainings**

**Coaching  
Calls**

**Champion  
Teams**

**Learning  
Community  
Sessions**

**Provocation  
&  
Formative  
Assessment**

# Built to Sustain & Spread



Trainers



Champions



Departments



# Strategically Aligned & Integrated **TACHC** — TEXAS ASSOCIATION OF — COMMUNITY HEALTH CENTERS

- Value-Based Care
- Non-Medical Drivers of Health (SDoH)
- Justice, Equity, Diversity & Inclusion (JEDI)
- Chronic Disease Management & Prevention
- Workforce Development
- Workforce Retention & Burnout-Reduction
- Disaster Preparedness, Response, Recovery
- Health Effects of Climate Emergencies

# Our Assessment Tools



- **Summative Assessment**
- **Organizational Assessment**
- **TIC Data Collection**
  - EHR
  - BH Adherence
  - HR

# Program Goals & Outcomes



**Disseminate  
Knowledge**

**Increase  
Workforce  
Retention**

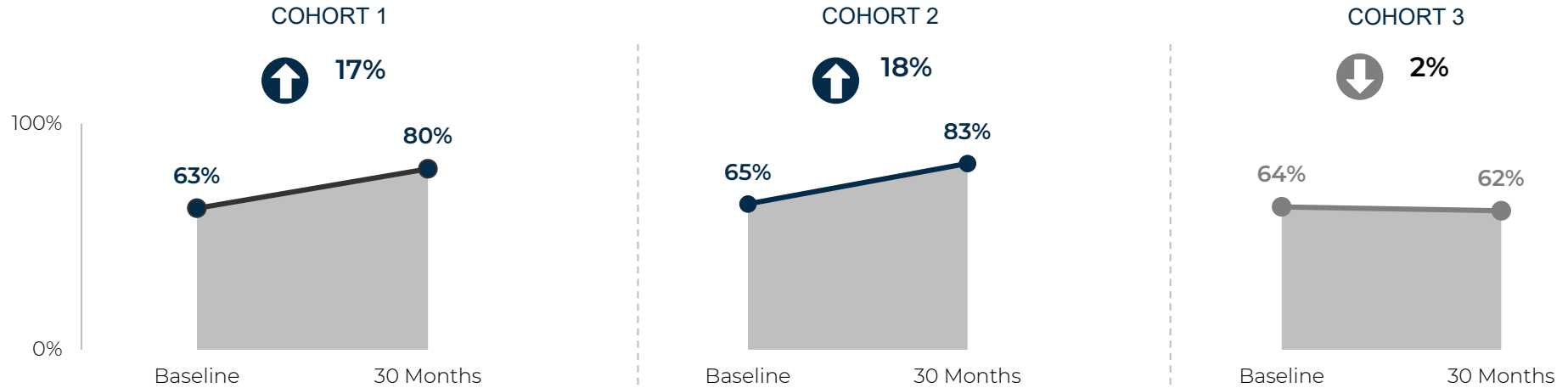
**Improve  
Health  
Outcomes**

# Disseminate TIC Knowledge



Staff at all levels are included in changing the culture of the health center.

Between the baseline and 30-month organizational assessments in three cohorts, there was an 11% increase in staff (n= 3,628) who agreed with statements about their training and education.

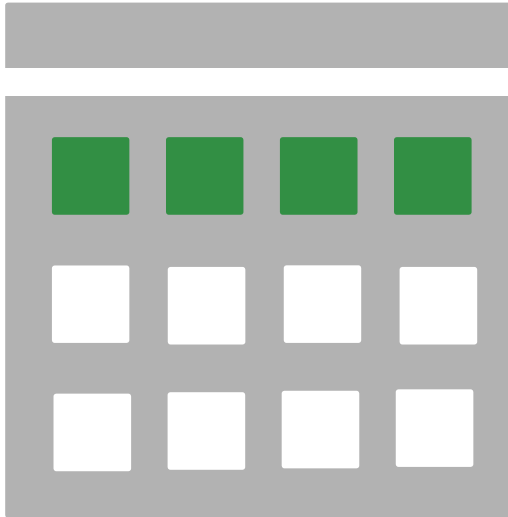


# Increase Workforce Retention



COHORTS 1, 2, 3, 4

 1.4x longer



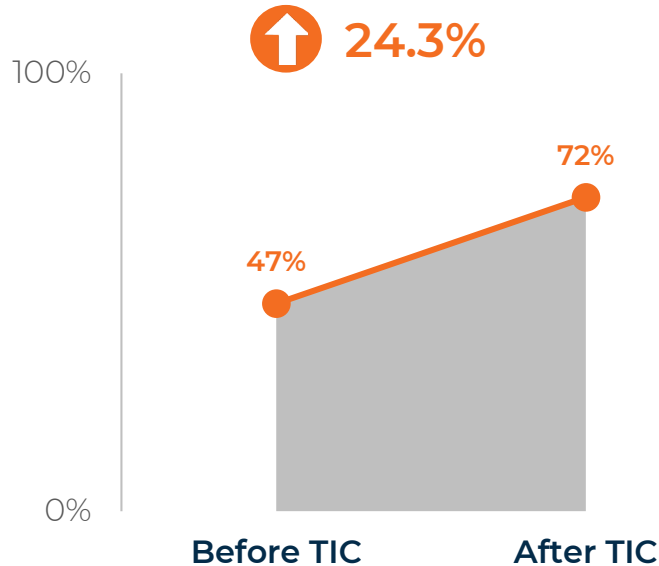
Staff (n=1,067) in all cohorts remained at their health center an average of **4-months longer**, even during the height of the COVID-19 Pandemic.

A **statistically significant increase** in the observed number of years of service among employees.

# Improve Health Outcomes



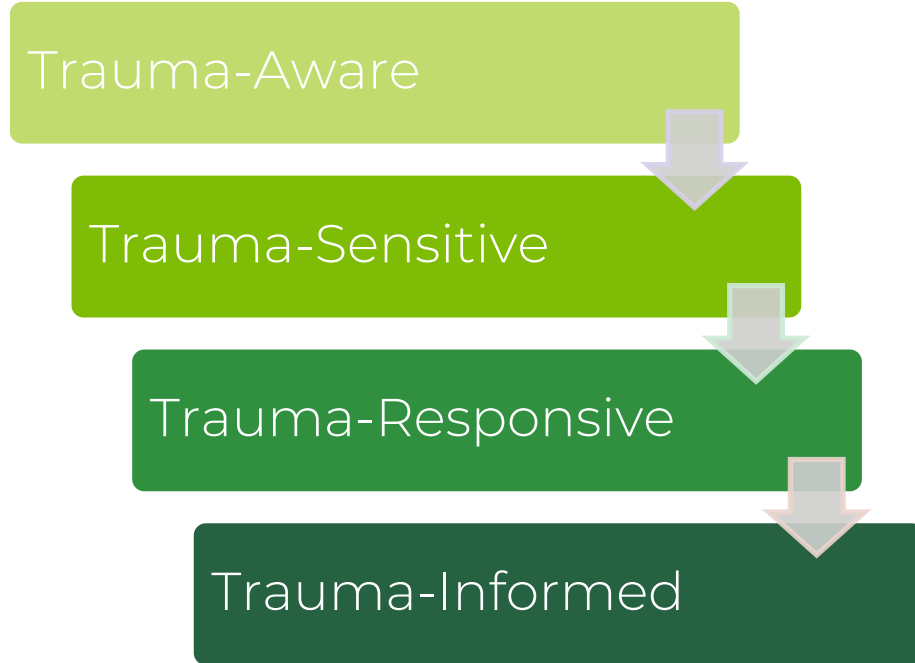
COHORTS 1, 2, 3, 4



Children were **1.4x more likely** to access care at a health center participating in the TACHC TIC Program.

A **statistically significant increase** among children with ADD/ADHD who kept their appointments.

# Identify your Destination



- **Change**
- **Transition**
- **Transformation**

# Questions?



# Thank you!

Aimee Rachel, LMSW  
TIC Clinical Coordinator  
[arachel@tachc.org](mailto:arachel@tachc.org)

Aniela Brown, MSW  
TIC Clinical Coordinator  
[abrown@tachc.org](mailto:abrown@tachc.org)

Dr. Roxana Cruz, MD, FACP  
Director of Medical & Clinical Affairs  
[rcruz@tachc.org](mailto:rcruz@tachc.org)



**TACHC**  
— TEXAS ASSOCIATION OF —  
COMMUNITY HEALTH CENTERS